

Sight glass, cast iron, DN 15-250, PN 16, flanges.



General

- Sight glass for liquids, steam, and gases.
- Body with embedded entry nozzle.
- Pressed hard glass acc. to DIN 8902, recommended for temperatures up to 150°C.
- Flanges acc. to DIN 2501.
- Face-to-face design acc. to EN 558/1 GR1.

Options

- Body in other materials.
- Butt welded ends.
- Female thread.
- With sight glass light.
- With impeller wheel.
- With other flange treatment.
- PN 10, PN 25, and PN 40.
- Borosilicate glass acc. to DIN 7080 for temperatures up to 300°C.
- With indicator flap.
- Heating jacket.
- With screen wiper.

Materials

DN	15	20	25	32	40	50	65	80	100	125	150	200	250
Body in cast iron GG-25	•	•	•	•	•	•	•	•	•	•	•	•	•
Flange in cast iron GG-25	•	•	•	•	•	•	•	•	•	•	•	•	•
Pressed hard glass	•	•	•	•	•	•	•	•	•	•	•	•	•
Sealings in Uni-blau	•	•	•	•	•	•	•	•	•	•	•	•	•

(• = standard)

Technical Data

DN	15	20	25	32	40	50	65	80	100	125	150	200	250
Pressure rating PN 16	•	•	•	•	•	•	•	•	•	•	•	•	•
Kv-value m ³ /h	7,4	14,2	22,8	36,5	60	98	148	224	350	547	778	1400	2190

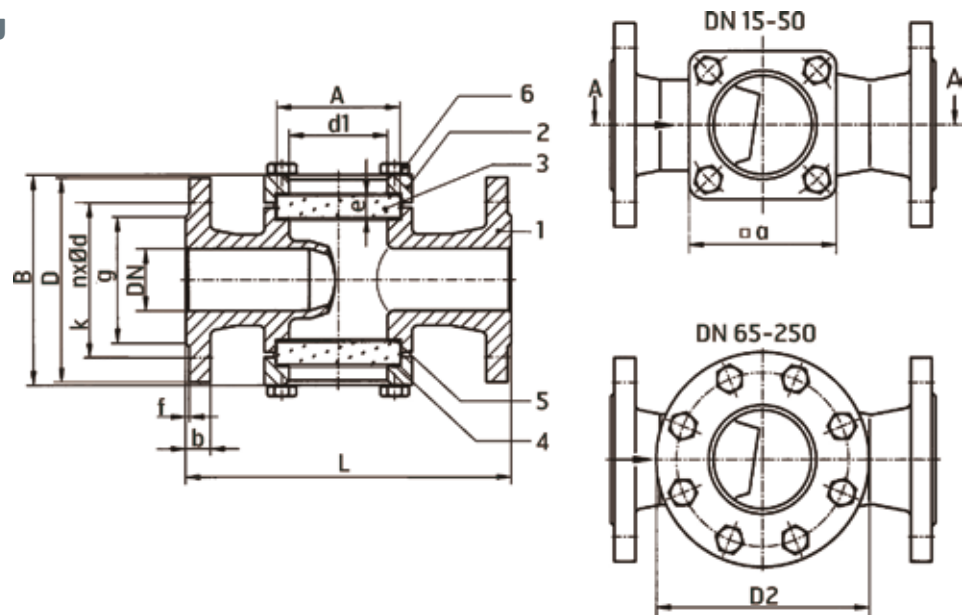
(• = standard)

Max Working Pressure bar (e) at Temperature

PN	-10°C	20°C	80°C	120°C	150°C	200°C*
16	16	16	16	16	14	13

* Borosilicate glass recommended.

Dimensional Drawing



Dimensional Data (mm) and Weight

DN	15	20	25	32	40	50	65	80	100	125	150	200	250
L	130	150	160	180	200	230	290	310	350	400	480	600	730
B	100	105	120	120	155	185	200	215	260	357	384	466	506
d1	32	32	48	48	65	80	80	100	125	175	175	175	175
a	70	70	85	85	110	125	-	-	-	-	-	-	-
D2	-	-	-	-	-	-	175	190	210	270	270	270	270
A	45	45	63	63	80	100	100	125	150	200	200	200	200
e	10	10	10	10	12	15	15	20	25	30	30	30	30
D	95	105	115	140	150	165	185	200	220	250	285	340	405
k	65	75	85	100	110	125	145	160	180	210	240	295	355
nxd	4x14	4x14	4x14	4x18	4x18	4x18	4x18	8x18	8x18	8x18	8x22	12x22	12x26
g	45	58	68	78	88	102	122	138	158	188	212	268	320
f	2	2	2	2	3	3	3	3	3	3	3	3	3
b	14	16	16	18	18	20	20	22	24	26	26	30	32
Weight (kg)	4	5	6,5	8,5	12	17	27	34	48	62	78	132	152

Details

1	Body
2	Flange
3	Glass
4	Sealing
5	Sealing
6	Hex.-nut

Markings

The sight glass is marked with DN, PN, materials, producer, and flow direction arrow.

Mounting

Optional.

Note the flow direction arrow.

Maintenance

The sight glass is maintenance free.

Order Number

DN	Art. No
15	6401015
20	6401020
25	6401025
32	6401032
40	6401040
50	6401050
65	6401065
80	6401080
100	6401100
125	6401125
150	6401150
200	6401200
250	6401250