

Sight glass, steel or stainless steel, frame 170-930 mm, PN 16.



General

- Rectangular welding sight glass.
- Consisting of base and cover frame, with glass made of borosilicate glass acc. to DIN 7081 for temperatures up to 280°C.
- Sight glasses are suitable for welding in or on.
- Certificate acc. to EN 10204/3.1 B on request.

Options

- Other materials.
- For higher working pressures.
- With light.
- With screen wiper.
- With spray-device.

Materials

Frame length (mm)	170	220	250	310	370	500	620	740	930
Base frame in steel Rst 37-2 (VM 6463)	•	•	•	•	•	•	•	•	•
Base frame in stainless steel 1.4571 (VM 6464)	•	•	•	•	•	•	•	•	•
Top frame in steel Rst 37-2	•	•	•	•	•	•	•	•	•
Sealing in asbestos free material	•	•	•	•	•	•	•	•	•
Borosilicate glass	•	•	•	•	•	•	•	•	•
Stud bolt in steel 5.6	•	•	•	•	•	•	•	•	•
Hex.-nut in steel 5.2	•	•	•	•	•	•	•	•	•

(* = standard)

Technical Data

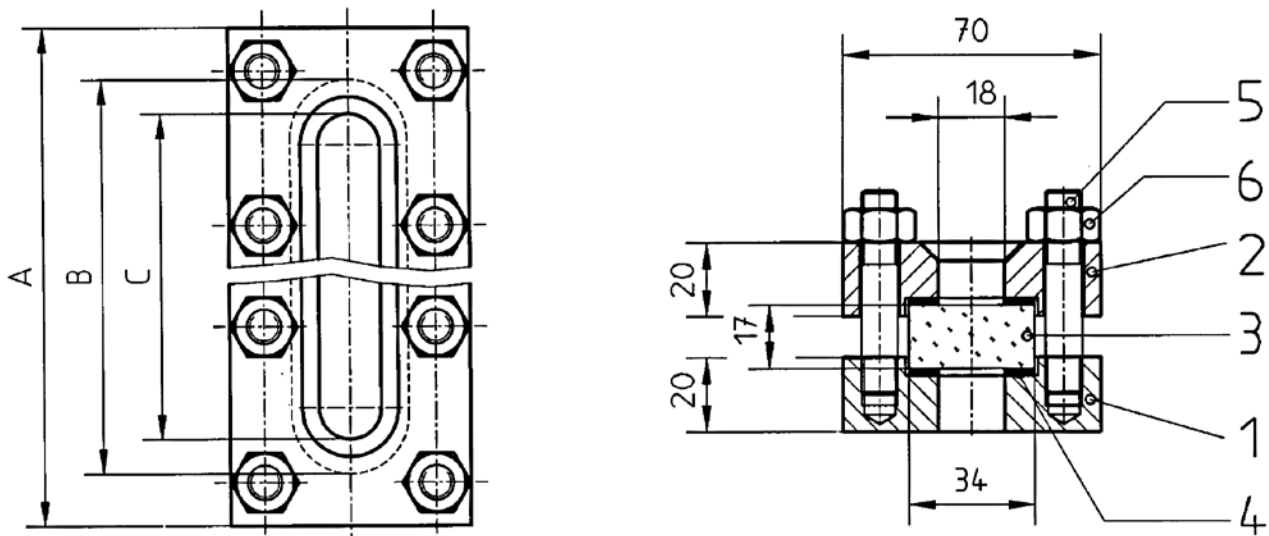
Frame length (mm)	170	220	250	310	370	500	620	740	930
Pressure rating PN 16	•	•	•	•	•	•	•	•	•

(* = standard)

Max Working Pressure bar (e) at Temperature

VM No	20°C	120°C	200°C	250°C	280°C
6463	16	16	14	13	11
6464	16	12	10	9	9

Dimensional Drawing



Dimensional Data (mm) and Weight

A	170	220	250	310	370	500	620	740	930
B	140	190	220	280	340	2x220	2x280	2x340	3x280
C	120	170	200	260	320	450	570	690	880
Screws	8xM10	10xM10	12xM10	14xM10	16xM10	24xM10	28xM10	32xM10	42xM10
Weight (kg)	3,2	4,0	4,5	5,5	6,5	9,0	11,0	13,0	16,5

Details

- 1 Base frame
- 2 Top frame
- 3 Glass
- 4 Sealings
- 5 Sealings
- 6 Hex.-nut

Markings

The sight glass is marked with DN, PN, materials, and producer.

Order Number

Ram	VM 6463	VM 6464
170	6463170	6464170
220	6463220	6464220
250	6463250	6464250
310	6463310	6464310
370	6463370	6464370
500	6463500	6464500
620	6463620	6464620
740	6463740	6464740
930	6463930	6464930