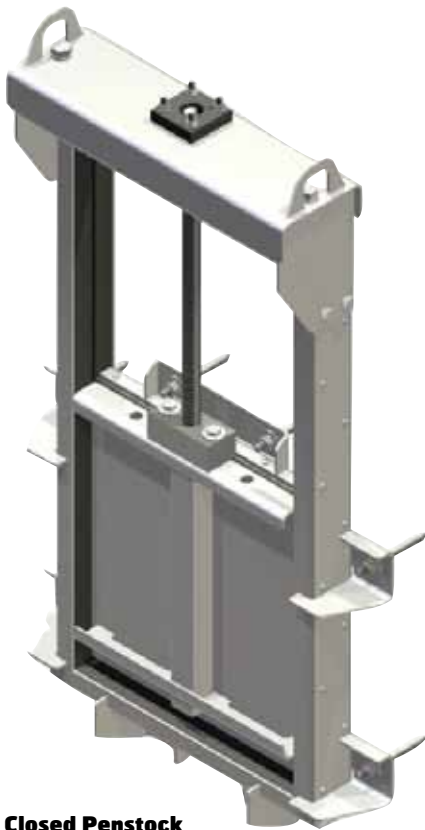
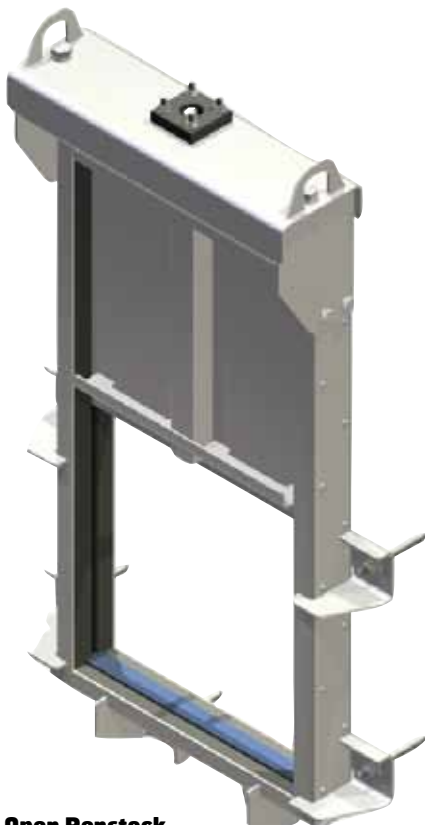


Sluice Gate, stainless steel, wall mounted, 100 x 100 mm – 800 x 800 mm.



Closed Penstock



Open Penstock

General

- Sluice gate used in surface, sewer, and process water systems.
- Vertical moving plate which shuts off a square opening.
- Both off- and on seating water tightness is achieved by using an EPDM lip seal mounted in the frame.
- Non rising stem.
- Flush invert.

Options

- Dimensions of your choice.
- Different materials.
- Rising stem.

Dimensions

Contact Ventim for dimensions.

Markings

The penstock is marked with DN, material, and producer.

Mounting

Mounting effort has been reduced using external metal brackets, rather than through-the-frame- mounting.

Maintenance

The valve is maintenance free.

Materials and Working Pressure

DN

Moving plate in stainless steel EN 1.4404

Stem in stainless steel EN 1.4404

Stem nut in POM (Poly-Acetan)

Bearing in OLG

Seal in EPDM

Pressure max 7 MwC on- and off seating

Order Number

Opening mm	Art. No
100 x 100	2010100
200 x 200	2010200
300 x 300	2010300
400 x 400	2010400
500 x 500	2010500
600 x 600	2010600
700 x 700	2010700
800 x 800	2010800