

CP3 channel penstock

Nominal size 200 x 200 to 1200 x 1200 mm, threeside sealing, for rectangular openings for doweling or embedding in concrete

CP3 is the first choice for sluice gates because of the easy way of installation in front of or into channels, and its high-quality corrosion protection. The prestressed sealing offers outstanding sealing performance, and is tight in on- or off-seating conditions.



Front view



Back view

Materials

Frame:	Stainless steel SS304 or SS316Ti
Sliding plate:	Stainless steel SS304 or SS316Ti
Sealing:	EPDM, wastewater resistant or NBR
Stem:	Stainless steel SS304 or SS316Ti
Stem nut:	GC-CuSn 12, seawater resistant bronze
Chem. anchor bolts:	Stainless steel S32304
<i>Other materials available on request.</i>	

Sealing performance

- Better than DIN 19569-4 class 5
- Constant sealing performance irrespective of the water level
- Frame design avoids contusion of the sealing
- Waste water resistant sealing material

Installation advantages

- Compact design, one-unit delivery, ready to install
- Quick and easy installation with few chemical anchor bolts
- No additional adjustment work necessary on site
- Bracing sleeves optionally available for lateral embedding

Operation advantages

- Maintenance free
- Self-cleaning stem nut

Corrosion resistance

- Maximum corrosion resistance due to stainless steel material, all acid cleaned and passivated in own pickling plant

Operation

- Operating key, hand wheel, electric or pneumatic actuator, gears and a wide range of extensions: see BÜSCH MAS programme

Customisations

- Rectangular intermediate sizes available
- Other sizes available on request

Accessories

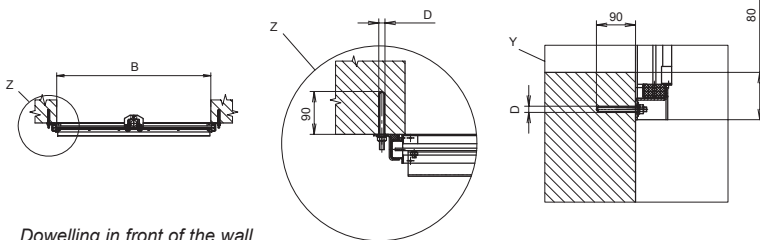
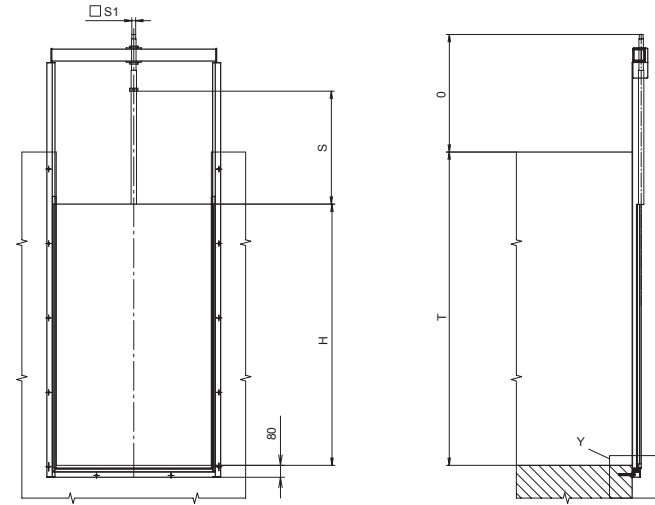
- MAS Modular Actuating System packages: see BÜSCH MAS programme
- MOBITORQ® Mobile Actuator: see brochure
- BEA® BÜSCH Electric Actuator: see brochure
- Operating key: e.g. All-in-One operating key

Areas of application

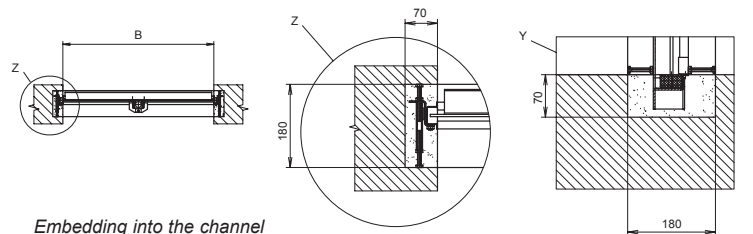
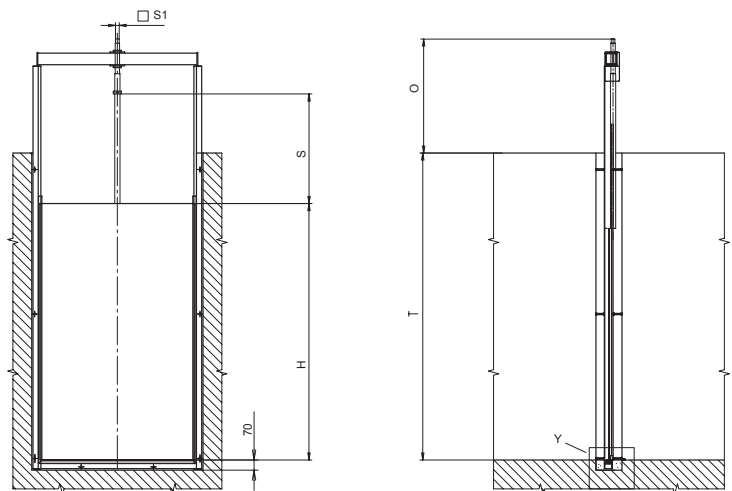
- Municipal and industrial wastewater treatment plants
- Rain reservoirs
- Irrigation systems

CP3 channel penstock

Nominal size 200 x 200 to 1200 x 1200 mm, for round or rectangular openings, for doweling or embedding in concrete



Dowelling in front of the wall



Embedding into the channel

CP3 channel penstock	
B	Specify when ordering
H	Specify when ordering
S	Specify when ordering
T	Specify when ordering
O	900 mm or customer specification
D	Ø 13
Turns/Stroke	Dependent on size



BÜSCH Technology GmbH

Neuburger Straße 26
 90451 Nürnberg, Germany
 E-Mail info@buesch.com
 Tel. +49 (911) 46 254-0
 Fax +49 (911) 46 254-70